

COST OF UNTREATED MENTAL ILLNESS

MISSOURI



1 IN 10 ADULTS

residing in Missouri has a serious mental illness (SMI). Without treatment, these can lead to unemployment, increased hospital and emergency room use, incarceration, suicide, and early death due to chronic medical conditions.



Major Depression



Schizophrenia



Bipolar Disorder



Anxiety Disorders

40%

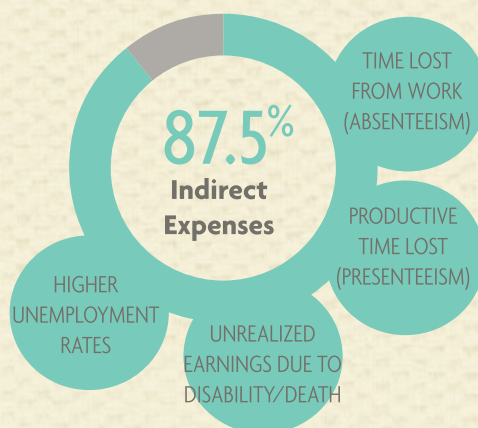
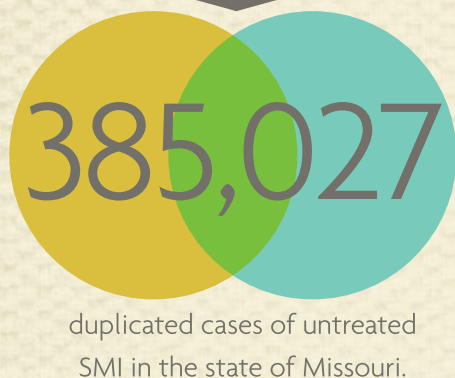
of cases with serious mental illnesses like these are generally untreated.

An economic model was developed by The HSM Group to estimate the costs of untreated SMI among adults, using Census data combined with prevalence rates.



Overall, the annual cost burden of untreated serious mental illness to the state of Missouri is estimated to be **\$2.5 billion**.

WHAT ARE THE COSTS OF SERIOUS MENTAL ILLNESS?

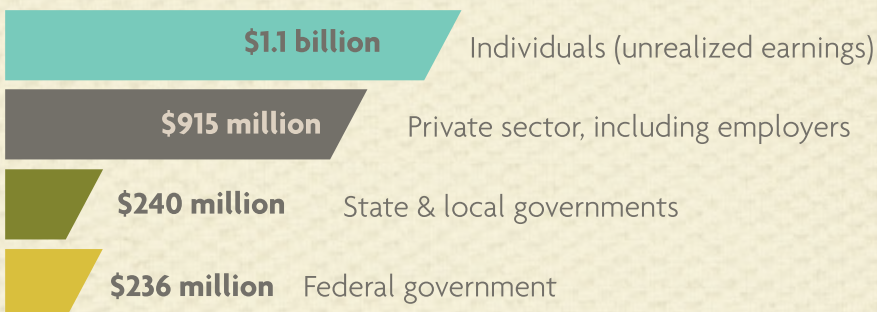


*The remaining costs are due to criminal activity, Social Security disability, and social welfare administration costs.

IN MISSOURI, UNTREATED SMI IS ASSOCIATED WITH



WHO PAYS FOR UNTREATED SERIOUS MENTAL ILLNESS?



Mental illness also affects many other lifestyle factors that, although very important and often preventable, could not be quantified in this model.

To use the calculator, visit hcfgkc.org/costs-untreated-mentalillness