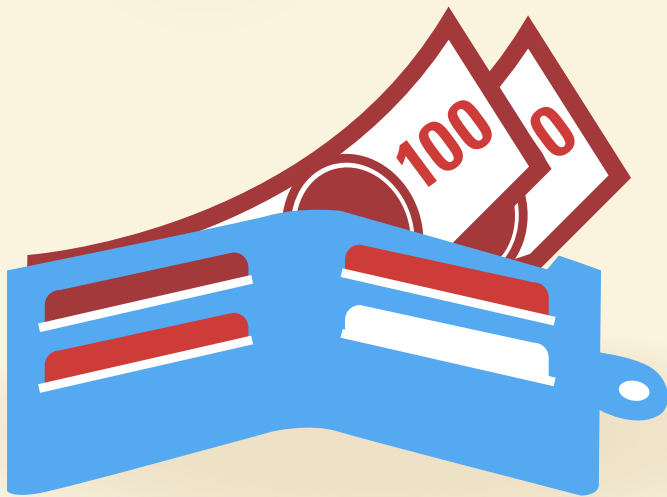
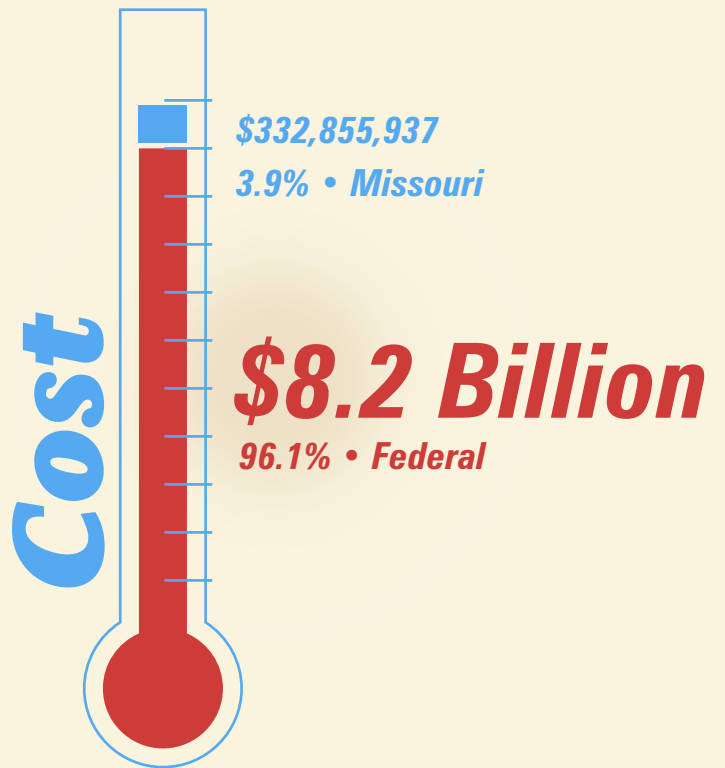
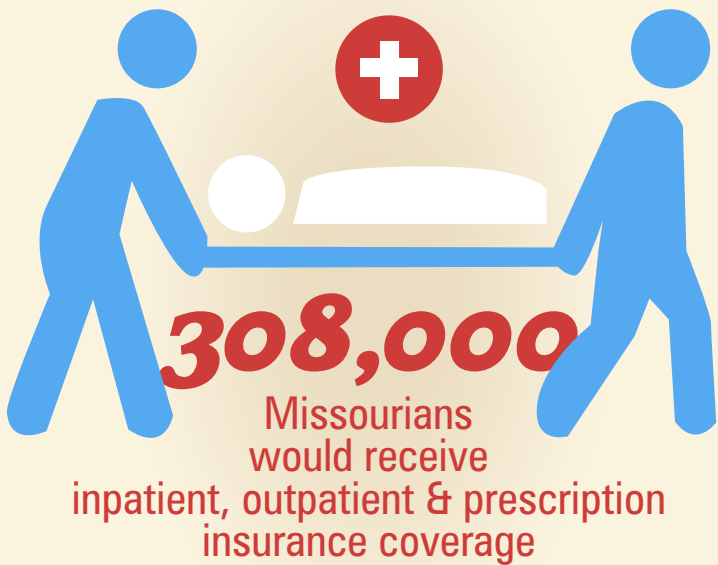
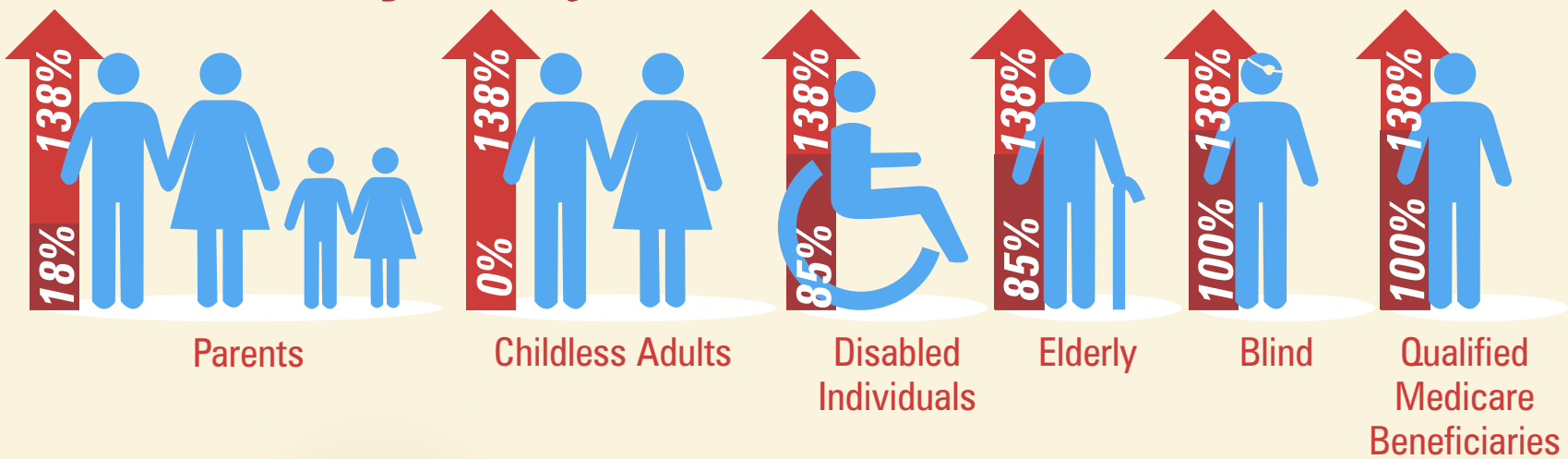


What you need to know about

MEDICAID EXPANSION in Missouri

In June 2012, the U.S. Supreme Court left it up to states to decide whether to expand their Medicaid programs.

Income Eligibility Limits Increase



\$1 Billion Saved

Cost-shifting is the "hidden health care tax," where the costs of providing care to the uninsured are shifted to those with private insurance.



Bring **20,000** jobs into Missouri in 2014