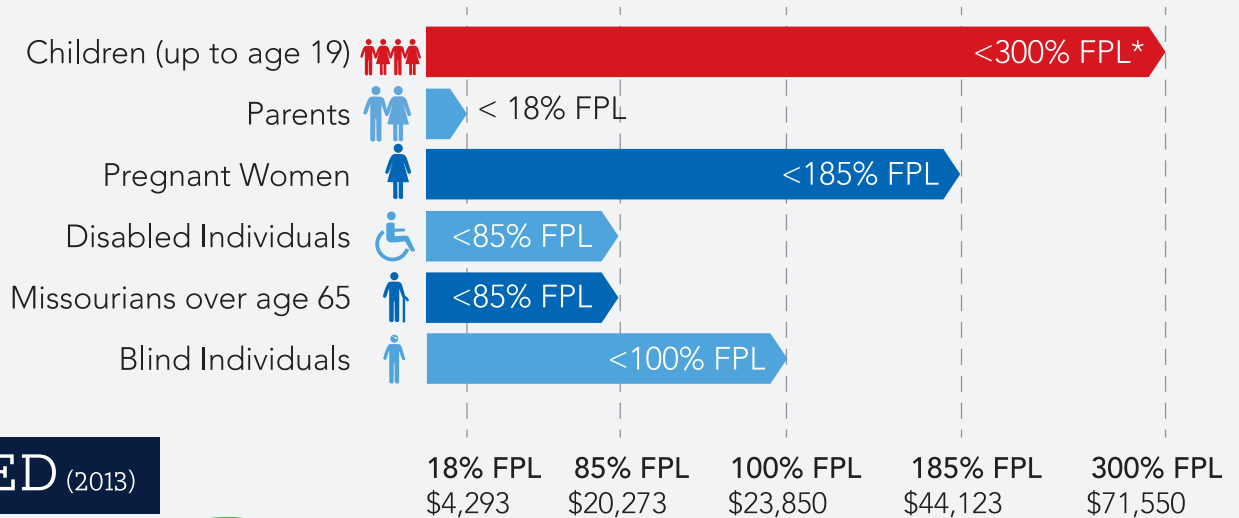


# MISSOURI MEDICAID 101

Medicaid is a federal-state partnership that provides health coverage for low-income people. The federal government offers matching funds to states to support the financing of Medicaid. In general, for every dollar spent on Medicaid, \$.62 comes from the federal government and \$.38 comes from the state. MO Health Net is the name of the Medicaid program in the state of Missouri.

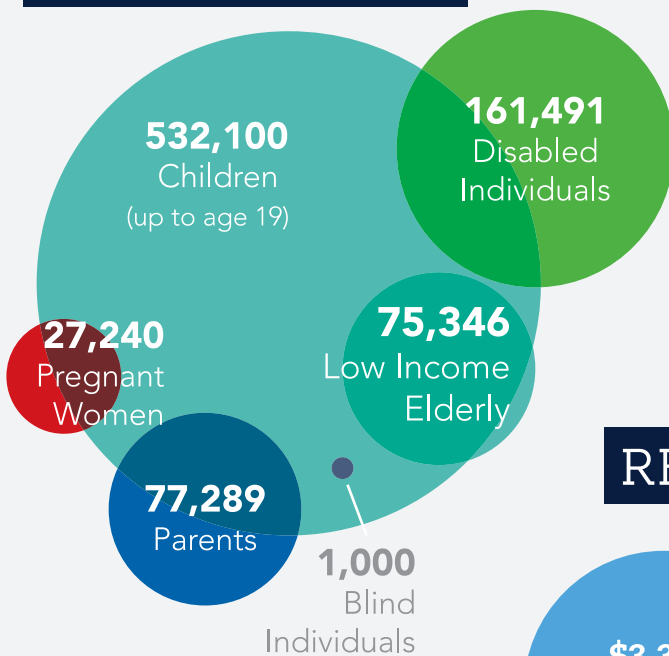
## COVERED POPULATIONS

In general, MO Health Net covers low-income children and their parents, aged, blind, or disabled individuals.

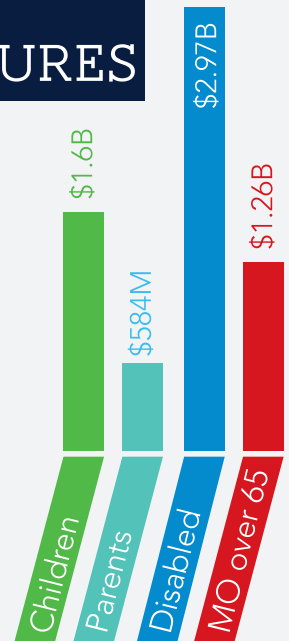


\*FPL = Federal Poverty Level. In 2014 FPL for a family of 4 is \$23,850.

## # ENROLLED (2013)

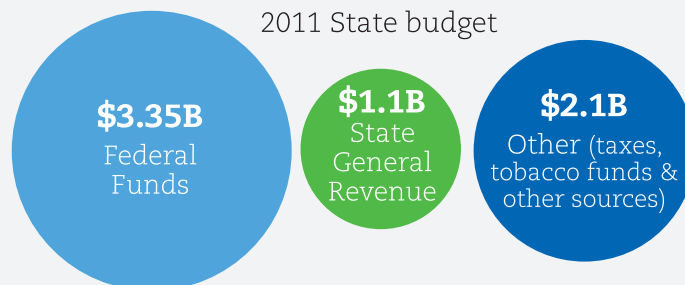


## ANNUAL EXPENDITURES

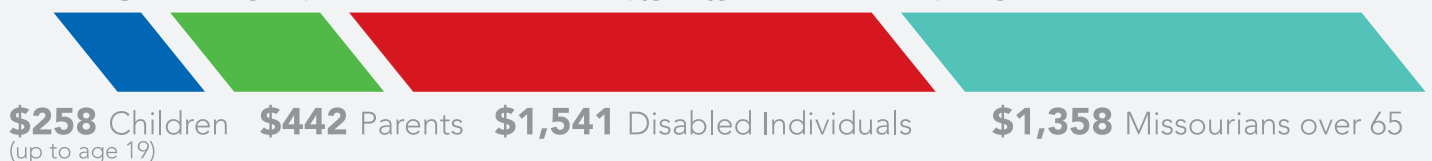


## REVENUE SOURCES

Sources for MO Health Net's 2011 State budget



## AVERAGE MONTHLY EXPENSES PER ENROLLEE





# SERVICES COVERED BY MEDICAID

- Inpatient hospital

Outpatient care

Physician services

Family planning

Nursing facilities and home care

Home health services

Durable medical equipment

Lab and x-rays

Midwife and nurse practitioner care

Medical and surgical dental care
- Non-emergency medical transportation

Screening and treatment of children under 21

Pharmacy services

Rehabilitation services

Mental health services

Psychiatric care

In-home care

Some dental services

# DELIVERY SYSTEM

MO Health Net delivers services through two primary payment methods:

**Fee-for-service:** Missouri pays provider for each medical encounter.

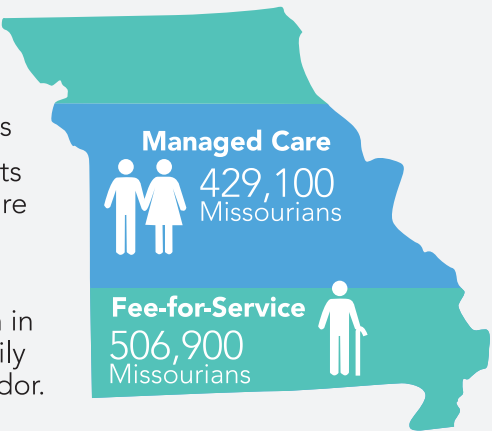
**Managed care:** Provides a particular range of benefits to each enrollee in return for a fixed payment to the provider.

## Fee-for-Service

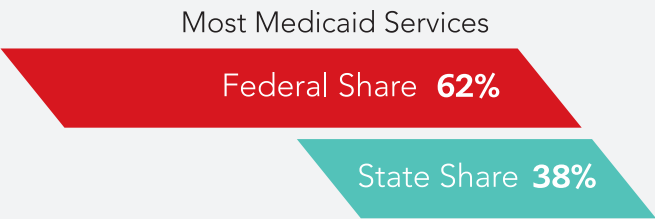
Aged, Blind, and Disabled Individuals  
Children and Parents in non-managed care counties.

## Managed Care

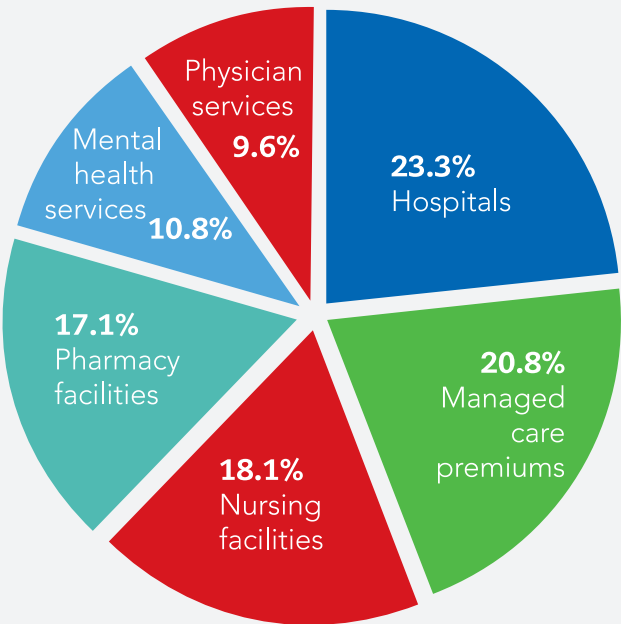
Adults and children in 54 counties, primarily along the I-70 corridor.



# FINANCING & EXPENDITURES



The 2013 MO Health Net budget was spent on:



*\*Based in part on the Missouri Foundation for Health's "Missouri Medicaid Basics" publication*